

URBAN lettings



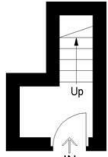
Star Street, London, W2 1QD

£2,900 PCM

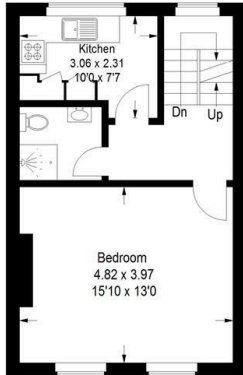
- Refurbished Throughout
- Two Double Bedrooms
- Excellent Transport Links
- Modern Kitchen
- Wood Flooring & Carpets
- Available Furnished
- Separate Living Room
- Split Level Flat
- Westminster City Council Tax Band E

Star Street, W2

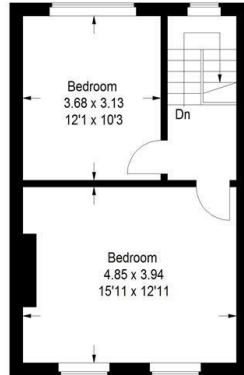
Approximate Gross Internal Area
 Ground Floor = 3.3 sq m / 35 sq ft
 First Floor = 37.4 sq m / 403 sq ft
 Second Floor = 37.4 sq m / 403 sq ft
 Total = 78.1 sq m / 841 sq ft



Ground Floor

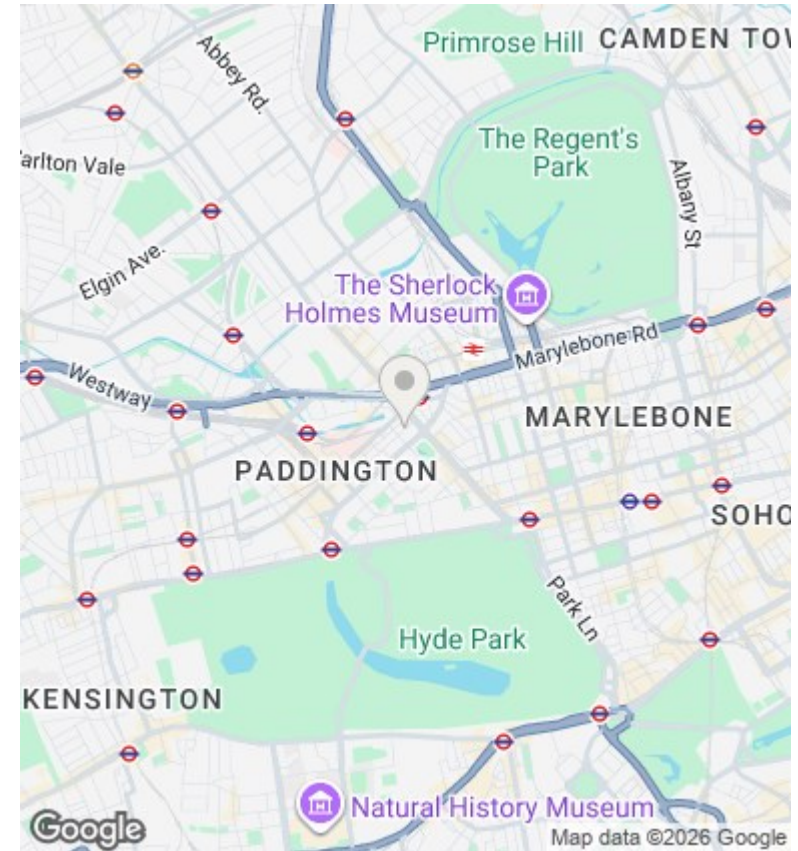


First Floor



Second Floor

This plan is for layout guidance only. Not drawn to scale unless stated. Windows and door openings are approximate. Whilst every care is taken in the preparation of this plan, please check all dimensions, shapes and compass bearings before making any decisions reliant upon them. (ID799693)



Directions

Viewings

Viewings by arrangement only. Call 020 7585 2761 to make an appointment.

Council Tax Band

E

EPC Rating:

D

Energy Efficiency Rating		Current	Potential
<i>Very energy efficient - lower running costs</i>			
(92 plus) A			
(81-91) B			
(69-80) C			
(55-68) D		68	77
(39-54) E			
(21-38) F			
(1-20) G			
<i>Not energy efficient - higher running costs</i>			
England & Wales		EU Directive 2002/91/EC	